

# ACCOMMODATION



Accommodation Central Otago	Room # 234	Location - Setting	QM – Qualmark SR – Self Rated	Restaurant / Winery / Café	Suitable Groups	Suitable FITs	Suitable Honeymoon
<a href="#">Marsden Lake Resort</a>	58	Cromwell - Lakeside marina	5 Star Silver	QM	Y	Y	Y
<a href="#">Harvest Hotel</a>	47	Cromwell - Township	3+ Star Silver	QM	Y	Y	
<a href="#">Central Park Apartments</a>	46	Cromwell - Gated community	4 Star	SR		Y	
<a href="#">Carrick Vineyard Houses</a>	9	Bannockburn – Vineyard	4 Star	SR	Y	Y – small	Y
<a href="#">Pure Pods</a>	2	Bannockburn – Mountaintop	Gold	QM		Y	Y
<a href="#">Seven Skies Lodge</a> <b>NEW</b>	8	Bannockburn – Vineyard	Opening Q3 2026			Y - small	Y
<a href="#">Olivers Boutique Lodge</a>	11	Clyde - Historic township	4.5 Star	SR	Y	Y - small	Y
<a href="#">The Lord Clyde Lodge</a>	9	Clyde - Historic township	4.5 Star	SR		Y – small	Y
<a href="#">Earnsclough Coach House</a> <b>NEW</b>	3	Clyde - Historic rural	4.5 Star	SR		Y	Y
<a href="#">Earnsclough Castle</a> <b>NEW</b>	6	Clyde - Historic rural	Opening Oct 2026		Y	Y - small	Y
<a href="#">Monte Christo Cottages</a>	3	Clyde - Historic vineyard	Provisional	QM	Y	Y	Y
<a href="#">Kaihanu Lodge</a> <b>NEW</b>	3	Clyde - Rural	4.5 Star	SR		Y	Y
<a href="#">Pitches Store</a>	6	Ophir - Historic village	4.5 Star Silver	QM	Y	Y - small	Y
<a href="#">Inverlair Lodge</a>	6	Oturehua - Mountain valley	4.5 Star Gold	QM		Y – small	Y
<a href="#">Parkside Glamping</a> <b>NEW</b>	3	Oturehua - Mountain valley	Opening Sep 2026			Y	Y
<a href="#">Wedderburn Cottages</a>	14	Māniatoto - High country farm	3.5 Star Bronze	QM		Y	Y
<b>CLOSED 2026:</b>		<b><i>Dunstan House &amp; Hawkdun Rise</i></b>					

# MARSDEN LAKE RESORT

e. manager@lakeresort.co.nz

Pisa Moorings, Cromwell

Boatshed themed apartments overlooking a marina on Lake Dunstan. Apartments with kitchens and lounges opening onto large balcony. Studios with kitchenettes and upstairs deck. Free on-site parking. Suit FITs and tour groups. On-site is the Moorings Restaurant & Bar/Café. Close to wineries, orchards wine and cycle trails. Queenstown Airport/Wanaka 1 hr drive.

58 	134 	 	       	 7km Cromwell	Queenstown 60km Dunedin 200km Christchurch 425km 
--	---	---	--	---	--



# HARVEST HOTEL

e. info@harvesthotel.nz

CBD, Cromwell

Independently owned 47 room hotel. Major renovations over past 5 years. **New reception and group dining.** Five Stags Restaurant & Bar plus Forage Café. Separate conference centre. Free parking. Cycle retail and hire on-site. Parklike grounds, borders the Cromwell Golf Course and close to wineries. Suit; FITs and Groups – Seat in Coach, Self-Drive, Tour Series, MICE

47 	140 	 	       	 0km Cromwell	Queenstown 55km Dunedin 197km Christchurch 420km 
--	---	---	--	---	--



**CENTRAL PARK APARTMENTS**

**e. info@centralparkapartments.co.nz**

**Cromwell**

Spacious apartment complex. Studios and 2-bed/2-bath apartments with kitchen, lounge and balcony. Free on-site parking close to Cromwell, Highlands Park, Orchards, Wineries and Cycle Trails. Ideal for self-driving FITs, Tours Groups. Spacious outdoor courtyard. Mountain views. Breakfast available via pre-order.

47 	146 	Close to Highlands	         	 3km Cromwell	Queenstown 51km Dunedin 200km Christchurch 423km 
--	---	--------------------	---	---	--



# CARRICK WINERY VINEYARD STAY

e. [experience@carrick.co.nz](mailto:experience@carrick.co.nz)

Bannockburn, Cromwell

Set on an organic vineyard adjacent (5min walk) to Carrick Winery Restaurant and the Lake Dunstan Cycle & Walking Trail. Arthur's House 6 people (3 beds/ 2 baths) Towan House 12 people (6 beds/3baths). Perfect for self-drive families or groups of friends seeking a vineyard stay and independence. Prestigious Bannockburn wine sub-region of Central Otago

2 	9 	Both houses are sited amongst vines 	        	 8km Cromwell	Queenstown 57km Dunedin 200km Christchurch 429km	
---	---	---	--	---	--	---



Arthur's House – 3bed 2bath



Towan House - 6bed 3bath

# PURE PODS – TĀIMA & HAURAPA

e. [reservations@purepods.com](mailto:reservations@purepods.com)

Bannockburn, Cromwell

Two luxury eco-built glass roof, glass-sided pods situated on a high-country station. Guaranteed privacy and mountain vistas. Two guests per pod. Suit; Honeymooners, nature lovers, star-gazers, people seeking to spoil themselves and connect with nature/each other. Local produce available on pre-order basis - dinner and breakfast. Outdoor cooking. Park and walk.

2 	4 	Complete privacy	        	 10km Cromwell	Queenstown 57km Dunedin 200km Christchurch 429km 
---	---	---------------------	---	--	--



OPENING Q4 2026

Private lodge with 8 rooms, rustic-lux aesthetic, high-end amenities. Adjacent to Bannockburn wineries, overlooking the Bannockburn inlet. Ideal for Lake Dunstan Trail and Kawarau Gorge Trail cyclists seeking 4.5 Star Boutique accommodation. On-site pilates studio, cycle-friendly facilities, owner hosted

8 	16 	<b>UNDER CONSTRUCTION</b>	        	 10km Cromwell	Queenstown 57km Dunedin 200km Christchurch 429km	
---	--	---------------------------	--	--	--	---

Concept



Stunning refurbishment of historic 1860s property. All rooms ensuited. Elegant linens, rugs, artworks and furnishings. Private guest courtyard, lounge and breakfast dining room. Fine dining restaurant on-site (Insiders Tip: pre-book), café & delicatessen, craft brewery & bar. 4.5 Star boutique property which can be booked within a luxury cycle package.

11 	22 	<b>HISTORIC PROPERTY</b>	         	 24km Cromwell	Queenstown 78km Dunedin 173km Christchurch 438km 
--	--	--------------------------	--	---	--



# THE LORD CLYDE

e. enquiries@thelordclyde.co.nz

Clyde

Restored heritage building. 4.5 Star Boutique B&B Lodge (olivers.co.nz/the-lord-clyde) offering 9 ensuited rooms, private guest dining room, guest lounge and courtyard. On-site manager and located on main street across from Olivers of Central Otago.

9 	18 	HISTORIC PROPERTY	          	 Queenstown 78km Dunedin 173km 24km Cromwell Christchurch 438km 
---	--	-------------------	--	--



# EARNSCLEUGH COACH HOUSE

e.ryan@earnscleughcastle.co.nz

Rural - Clyde

Historic Coach House at Earnsleugh Castle (Heritage NZ Cat.1) surrounded by 3 NZ Great Rides. Restored 3-bed heritage property with modern comforts: kitchen, lounge with wood burner, washer/dryer, free parking and e-bike charging. 3 Beds/1 Bathroom. Wander a century-old garden, private castle tour, free Clyde pick-up. Close to wineries, Packing Shed Café, Galleries.

3



6



Single Party  
Booking  
Min. 2 night stay



24km Cromwell

Queenstown 78km

Dunedin 173km

Christchurch 438km





# MONTE CRISTO WINERY

e. hello@montechristowinery.co.nz

Vineyard - Clyde

Three luxurious, spacious self-contained cottages set on vineyard. Birthplace of Otago Wine (1864). Free onsite parking with e-chargers for cars and bikes. Private Wine Tastings, Historic Tasting Room, Underground Barrel Hall, Winery Tours (late 2025)

3 	10 	<b>Vineyard</b> Min. 2 nights	        	 26km Cromwell	Queenstown 81km Dunedin 174km Christchurch 441km	
---	--	----------------------------------	--	--	--	---



# KAIHANU LODGE

e. kaihanulodge@gmail.com

Rural - Clyde

Premium hosted B&B on a rural property only 5 mins to Clyde Township. Two luxurious, spacious king rooms with views and own private guest lounge. Tennis Court on-site and complimentary e-bikes to explore Wineries, local Trails, visit small townships and galleries, cafés and more. Also a beautifully appointed 'star-gazers cabin' on-site should group size be 6 pax.

2 	4 	Rural Property	        	 26km Cromwell	Queenstown 81km Dunedin 174km Christchurch 441km	
---	---	----------------	--	---	--	---



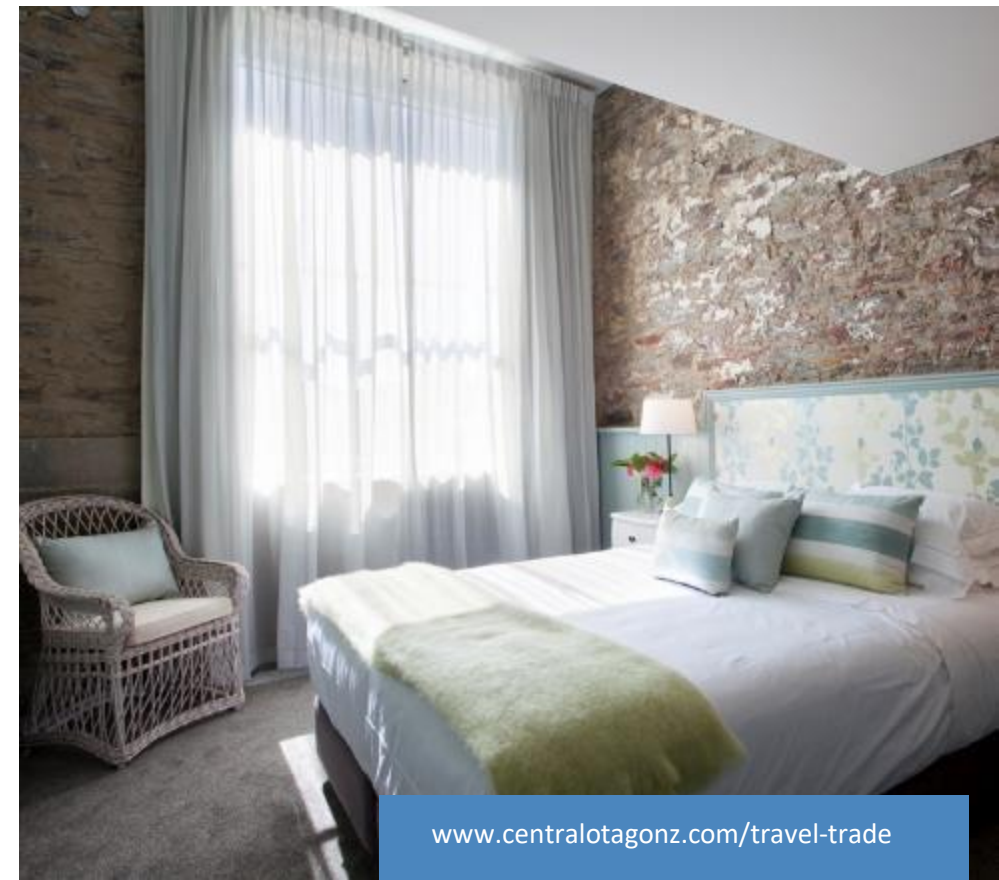
# PITCHES STORE

e. stay@pitches-store.co.nz

Ophir (28kms from Clyde)

Elegant restoration of a Heritage NZ listed building now a Boutique B&B Lodge (pitches-store.co.nz) with private guest dining room plus on-site café and evening fine dining restaurant. All rooms are ensuited. Outdoor guest spa pool to see the stars!

6 	12 	<b>HISTORIC PROPERTY</b>	     	 Queenstown 106km 52km Cromwell Dunedin 192km Christchurch 435km 
---	--	--------------------------	--	---



# INVERLAIR LODGE

e. info@inverlairlodge.co.nz

Oturehua (approx. 30kms to Naseby or Ophir)

Qualmarked Gold 4+ Star 6 room lodge offering an intimate escape with extraordinary views. Relax in modern rooms, enjoy outdoor activities from cycling, hiking, fly-fishing to on-site stargazing. Perfect halfway point for visitors driving the Central Otago Touring Route from Dunedin to Queenstown/Wānaka. Whole lodge able to be booked privately.

6 	16 	RURAL SETTING BOOK: ON-SITE NIGHT SKY TOUR	     	 86km Cromwell	Queenstown 139km Dunedin 150km Christchurch 403km 
---	--	--	---	---	---



# PARKSIDE FARM GLAMPING

e. yohann@parksidefarm.co.nz

Oturehua (approx. 30kms to Naseby or Ophir)

Stay in the natural beauty of the Ida Valley on a 2,100 acre working farm. Enjoy luxury safari tents or a wooden dome all ensuited. Guests enjoy the comfort expected from a premium experience. The Rail Trail passes through the farm. Half-way between Wanaka/Queenstown and Dunedin. Peaceful, nature-connected escape - premium comfort and breathtaking views

3 	6 	<b>RURAL SETTING PREMIUM GLAMPING</b>	     	 86km Cromwell	Queenstown 139km Dunedin 150km Christchurch 403km 
---	---	---	--	--	---



# WEDDERBURN COTTAGES

e. [enquiries@wedderburn.net.nz](mailto:enquiries@wedderburn.net.nz)

Wedderburn (approx. 20kms to Naseby)

Farm cottages (14) on a working high-country station. Each cottage is ensuited with a kitchenette and outdoor balcony to soak up the incredible views from sunrise to sunset with complimentary starry nights. Information desk onsite plus fun rural 9-hole golf course and tavern at the end of the drive for lunches and evening dining.

14 	30 	<b>HIGH COUNTRY FARM COTTAGES</b> 	     	 95km Cromwell	Queenstown 150km Dunedin 137km Christchurch 392km 
--	--	--	---	---	---



# DUNSTAN HOUSE & HAWKDUN RISE

## - SOLD & CLOSED Q2 2026 -

Dunstan House  
- closed



Hawkdun Rise  
- closed



# MAP & TOURING



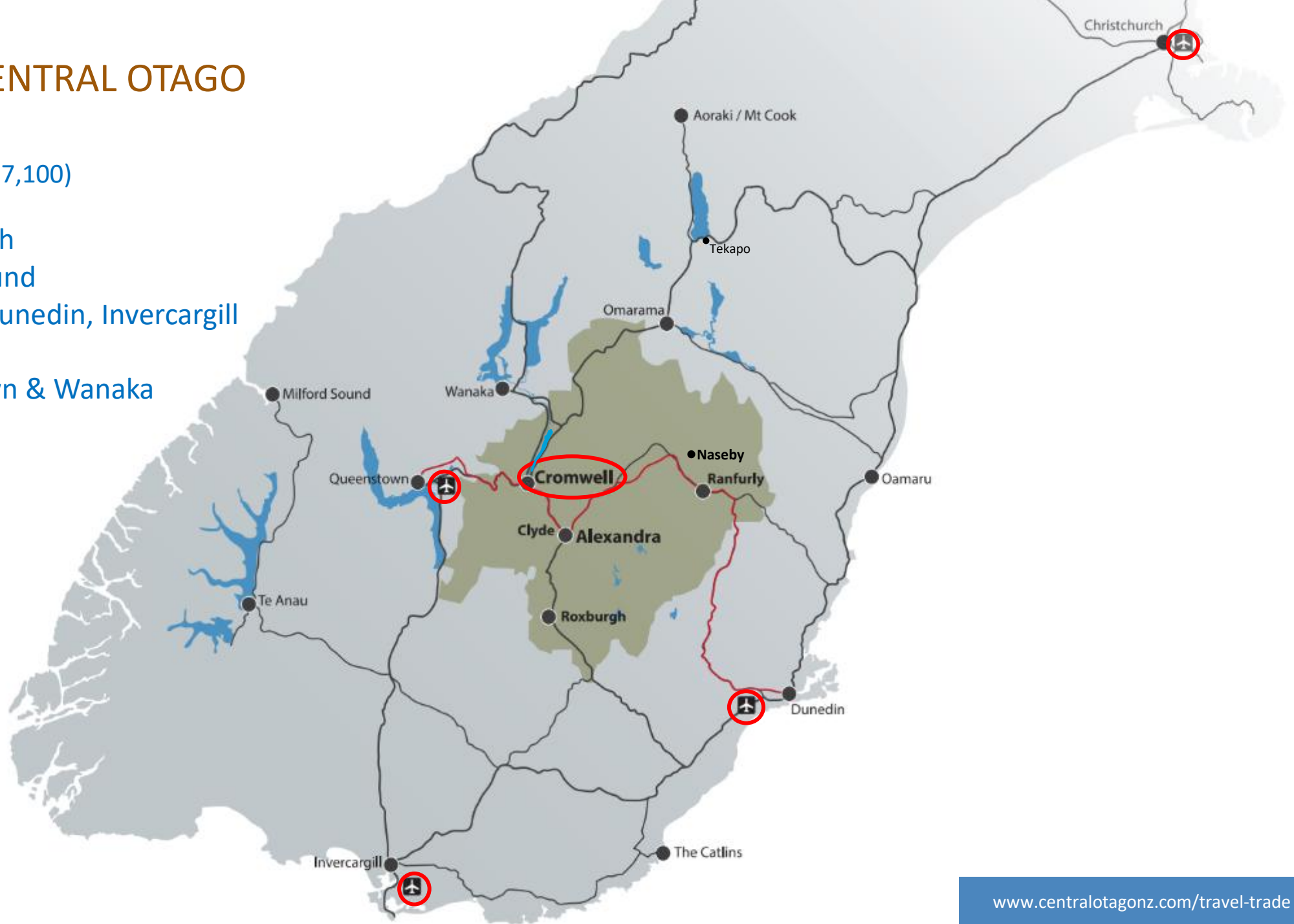
## CENTRAL OTAGO

Cromwell ▪ Alexandra ▪ Clyde ▪ Roxburgh ▪ Ranfurly

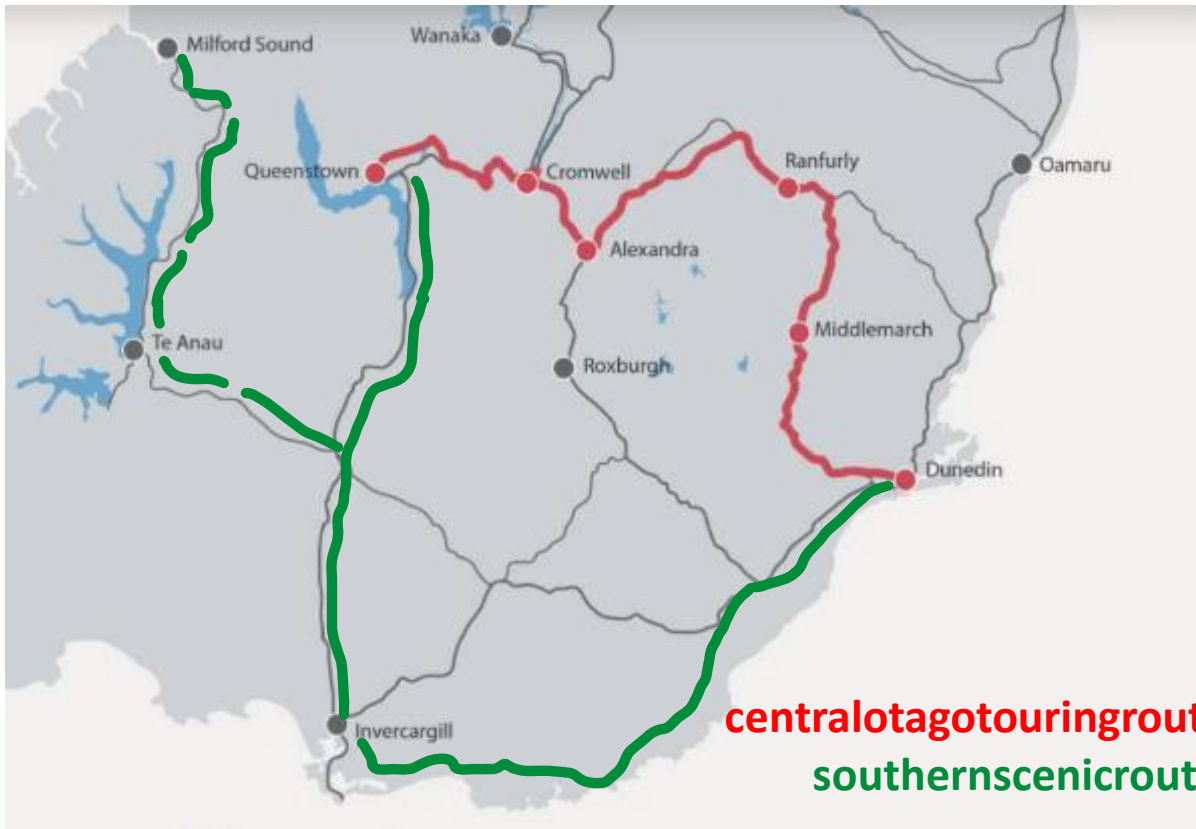
# DRIVING TO CENTRAL OTAGO

## CROMWELL (pop. 7,100)

<u>Hours</u>	<u>From</u>
5.5	Christchurch
4.5	Milford Sound
3.0	Mt Cook, Dunedin, Invercargill
2.5	Tekapo
< 1	Queenstown & Wanaka



# TOURING ROUTES – Lower South Island



[centralotagotouringroute.co.nz](http://centralotagotouringroute.co.nz)  
[southern scenicroute.co.nz](http://southern scenicroute.co.nz)



[southernway.nz](http://southernway.nz)

# THANK YOU

Andrea Lauder  
Trade Marketing Manager - Tourism Central Otago  
e. [andrea.lauder@codc.govt.nz](mailto:andrea.lauder@codc.govt.nz)

## ONLINE RESOURCES

INSPIRATION: [CENTRALOTAGONZ.COM](http://CENTRALOTAGONZ.COM)

TRAVEL TRADE: [CENTRALOTAGONZ.COM/TRAVEL-TRADE](http://CENTRALOTAGONZ.COM/TRAVEL-TRADE)

BUSINESS EVENTS: [CENTRALOTAGONZ.COM/BUSINESS-EVENTS](http://CENTRALOTAGONZ.COM/BUSINESS-EVENTS)

SOUTHERNWAY.NZ | [CENTRALOTAGOTOURINGROUTE.CO.NZ](http://CENTRALOTAGOTOURINGROUTE.CO.NZ)